

## Specifications

Lifting capacity: 18,000 lbs

Lifting system: hydraulic lifting system with  
microprocessor controlled  
tracking/synchronization system

Lifting height: 69"

Lifting time: 89 seconds

Motor power: 3 hp per column

Weight: 1310 lbs per column

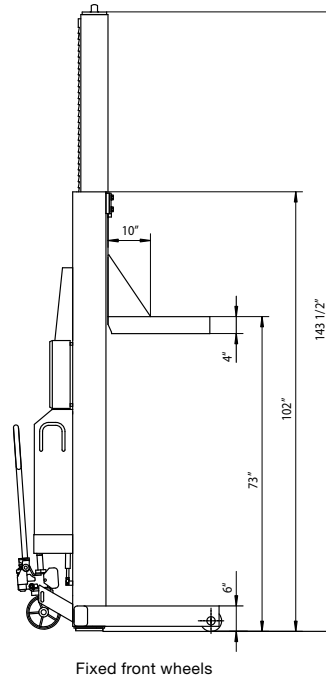
Column height: 102"

## Maximum safety:

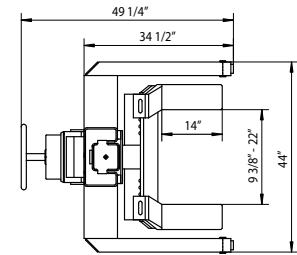
- ANSI/ALI-ALCTV certified  
(United States of America)
- CSA certified (Canada)
- CE certified (Europe)
- Low voltage control cabinet
- Automatic overload protection
- Independent mechanical locking system
- Microprocessor-controlled tracking system
- Automatic stop when highest position is reached
- Dead-man's operation
- Emergency switch on every control box
- Splash-proof electrical system (NEMA 4 / IP65)

## More information?

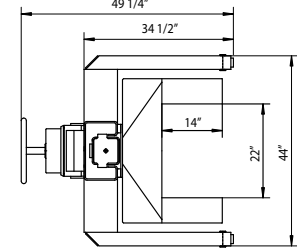
For more or specific information about the ST 1082, or one of the other quality products from Stertil-KONI, please contact us for further assistance.



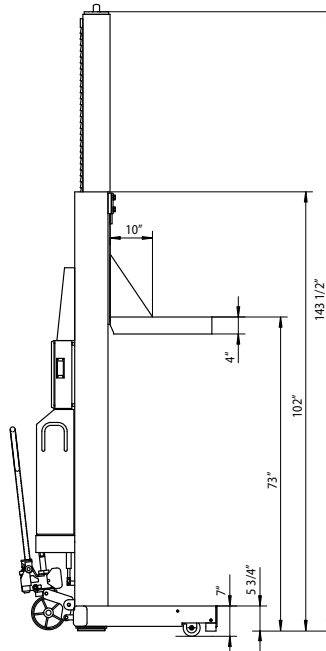
Fixed front wheels



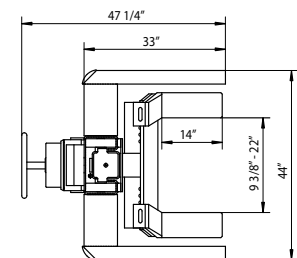
Adjustable fork



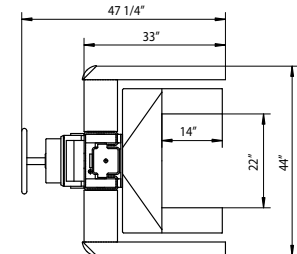
Fixed fork



Retractable front wheels



Adjustable fork



Fixed fork

\* Technical specifications are available at [www.stertil-koni.nl](http://www.stertil-koni.nl)



# stertil KONI

Stertil Koni U.S.A. Inc., 200 Log Canoe Circle, Stevensville, Maryland 21666

Tel. 410-643-9001 Toll free 800-336-6637 Fax 410-643-8901

[www.stertil-koni.com](http://www.stertil-koni.com) E-mail: [lifts@stertil-koni.com](mailto:lifts@stertil-koni.com)



A MEMBER OF THE KROYMANS A.R.M.-STOKVIS GROUP

**ster<sup>til</sup>** **KO<sup>NI</sup>**



**Ready for the future**



**ST 1082**  
**Mobile Column lifts**  
**capacity 18,000 lbs**



Two hard and fast laws apply in today's maintenance and repair facilities: time is money and an agreement is an agreement. This is why more and more workshops are opting for lift systems and accessories made by Stertil-KONI. They know these products enable them to always live up to their promises. The equipment is user-friendly and thoroughly reliable.

## ACTIVE WORLDWIDE

Stertil-KONI products are innovative and characterized by excellent value-for-money. This advantage results from an efficient production process by which custom work is accomplished with standard components. The use of welding robots, CAD systems and other advanced techniques lowers production costs while at the same time increasing quality. Stertil-KONI products are market leaders. Stertil-KONI is the first vehicle lift manufacturer to achieve ISO 9001 certification. No wonder that Stertil-Koni products are being exported to an increasing number of countries. Our company has sales organizations in the United Kingdom, the Netherlands, Germany, France, Poland and the United States. The flagship of our export line is the mobile column lift. The popularity of this new and advanced Stertil-KONI product lies in the fact that it has cleared the way for efficient and flexible garage management.

# Stertil-Koni: "Ready for the future"



### Superior engineering

The ST 1082 hydraulic mobile column lift has a lifting capacity of 18,000 lbs per column. Consequently, four columns have a total lifting capacity of 72,000 lbs.

The total lifting capacity can be increased by adding more columns to the system up to a maximum of 28 columns.

The microprocessor controlled lifting system, combined with a unique hydraulic synchronization system, ensures a very smooth movement of the lifts over the complete travel.

### Ready for the future

The length of the pick-up forks is 14" standard, therefore the Stertil-KONI ST 1082's are capable of handling

# dy for the future”

**super single drive axle tires**, in accordance with the tire manufacturer’s recommendations.

The clearance between the column and the vehicle is 10”, therefore avoiding the columns contacting the side of the vehicle in the event of a flat tire or air suspension failure.

## Rapid Lifting and Lowering

The total lifting height of 69” is reached in just 89 seconds. Together with a selectable lowering speed Stertil-KONI mobile lifts are among the fastest in the world.

## Lifetime guarantee

The patented, synthetic runner wheel system is self-lubricating and therefore does not require any maintenance. This runner wheel system comes with a lifetime guarantee.

## Easily Moveable

Thanks to the hydraulic pallet truck mechanism, combined with our patented gas shocks, we offer you the best possible automatic overload protection.

The unique Stertil-KONI design enables one person to move the column very easily.

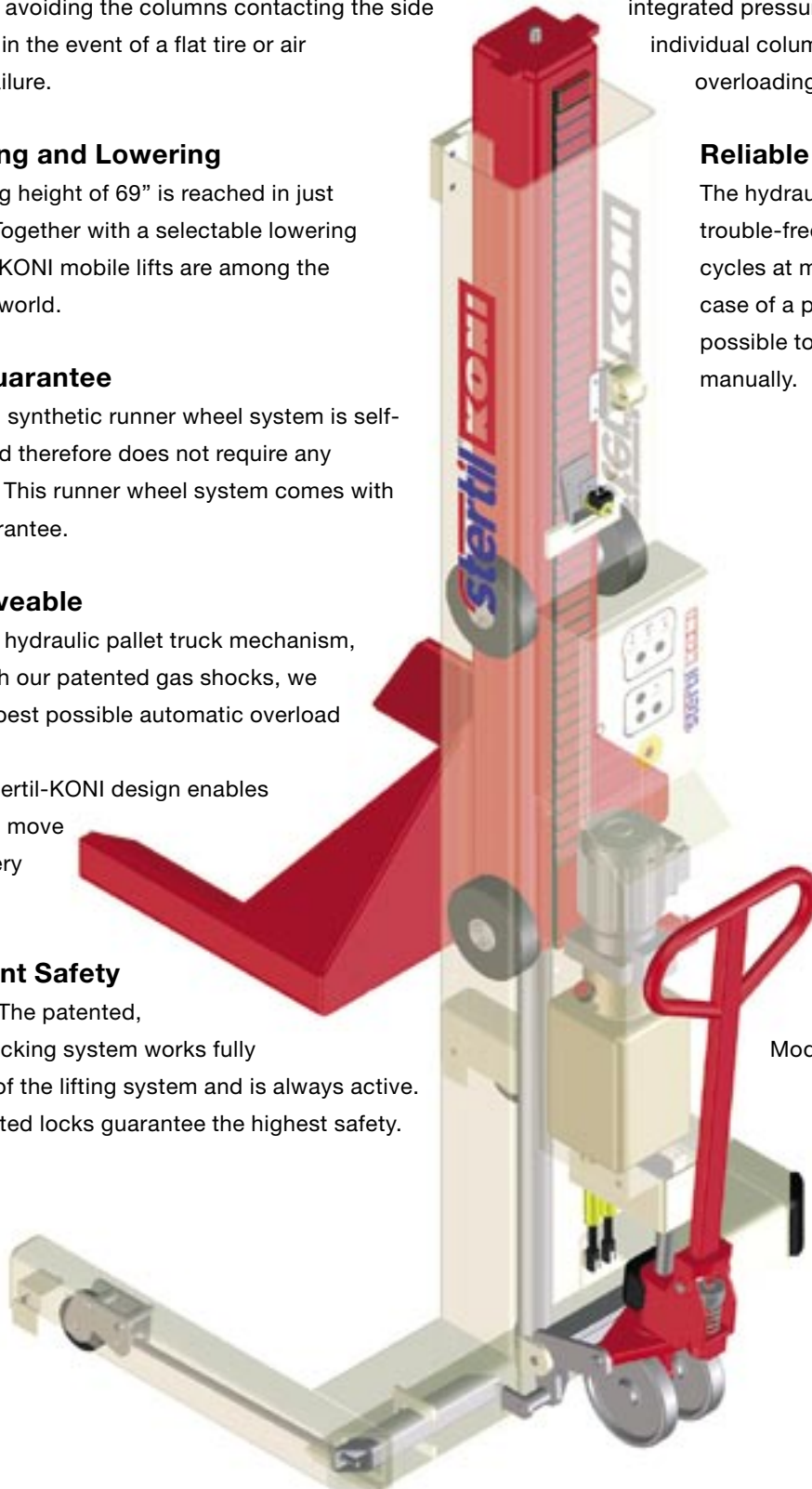
## Independent Safety

**Mechanical:** The patented, mechanical locking system works fully independent of the lifting system and is always active. Gravity activated locks guarantee the highest safety.

**Hydraulic:** Every lifting cylinder is equipped with flow control check valves, which are active during the complete range of travel. By means of our standard integrated pressure relief valves, each individual column is protected against overloading.

## Reliable

The hydraulic lift system works fast, trouble-free and is tested with 50,000 cycles at maximum load. Even in the case of a power supply failure, it is possible to lower the columns manually.



Model ST 1082RSF

U N I Q U E D E S I G N

# Ready



## Flexible

Every mobile column lift operates safely and quickly for loads up to 18,000 lbs. You can increase the total lifting capacity by adding extra columns.

No adaptation of the column is needed. The number of columns that can be connected together, with the superior control system, can be increased from 2 up to 28 columns in one set-up.

## Super single drive axle tires

The length of the pick-up forks is 14" as standard, therefore the Stertil-KONI ST 1082's are capable of

handling super single drive axle tires, in accordance with the tire manufacturer's recommendations.

## Clearance

The clearance between the column and the vehicle is 10", therefore avoiding the columns contacting the side of the vehicle in the event of a flat tire or air suspension failure.

## Innovative

Programmable features e.g. maximum height setting. On-board diagnostics.



# for the future



### Selectable lowering

Lowering speed selector switch for normal or slow descent of the vehicle (patent pending).

### Lifetime guarantee

The patented, synthetic runner wheel system is self-lubricating and therefore does not require any maintenance. This runner wheel system comes with a lifetime guarantee.

### Highest safety standards,

- Independent mechanical locking system.
- Carriage safety ladder increments from just 1 1/4".
- Automatic overload protection.
- The lifting system is subjected to 50,000 full load lifting tests.



I N N O V A T I V E

# Control systems

## Superior control system ST 1082S

- According to the EN 954-1 Cat. 2 and future EN ISO 13849-1 directives.
- Up to 28 columns can be connected in one set-up.
- Integrated phase check controls.
- User-friendly operation through selector button on every column for individual, paired and synchronized operation.
- Programmable features e.g. maximum height setting.
- **Slow lowering function through selector switch (patent pending).**
- Numerical on-board diagnostics.
- NEMA 4 / IP 65 splash proof design.
- Control voltage 24V/DC.



## Conventional control system ST 1082E

- System operation, including individual and paired, from the master column.
- Integrated phase check controls.
- User-friendly operation through selector button on control cabinet.
- Programmable features e.g. maximum height setting.
- Maximum 4 columns can be connected.
- Standard cables, hard wired on the slave columns, with free entry lay out.
- Numerical on-board diagnostics.
- NEMA 4 / IP 65 splash proof design.
- Control voltage 24V/DC.



## The following models can be identified:

	ST 1082FSF	ST 1082FSA	ST 1082RSF	ST 1082RSA	ST 1082E
Superior control system with a control cabinet on each individual column.	●	●	●	●	
Conventional control system with one master control cabinet in a set of maximum 4 columns					●
Patented slow lowering selector switch for slow and normal descent speed of the vehicle.	●	●	●	●	
Hydraulic pallet jack equipped with patented automatic overload protection. For easy moving and relocation of the column.	●	●	●	●	●
Clearance between carriage and vehicle contact point is 10" In the event of a vehicle air-suspension failure, or a flat tire, this will avoid the column contacting the vehicle.	●	●	●	●	●
Fixed forks length 14" suitable for handling super single drive axle tires.	●		●		●
Adjustable forks length 14" suitable for handling super single drive axle tires. No separate wheel adapters are needed.		●		●	
Synthetic fixed front wheels to reduce floor surface pressure (especially compared to steel wheels)	●	●			●
Retractable wheel design integrated in the base frame, reducing floor surface pressure and improving column stability.			●	●	

# Options

## Wheel Adapters

In case it is required to lift vehicles with small wheels, reducer sleeves are available.

Vehicles with wheel diameters R12-R15 require two wheel adapters. One wheel adapter is sufficient for wheel diameters R15-R17.

## Special versions

On request special versions are available. e.g. wide-fork versions, capable of handling wheel diameters up to R 24.5/ 63".

## Drive over connection cables

These sturdy connection cables are provided with a steel interior sheathing. They can cope with the wheel pressure of trucks and buses without any problem. (Available in combination with the superior control system.)



## Base frame extensions

Base frame extensions in combination with fork extensions (20" long) to lift recreational vehicles with in-set wheels. (Available for ST 1082FSF, ST 1082E and ST 1082FSA models.)

## Remote Control

An optional remote control will allow the operator to control the system from the optimum location. The remote control, with up and down buttons, is also equipped with an emergency stop and is supplied with 33 feet of cable.



## Forklift adapters

The combination of 2 mobile column lifts with special tracks (drive-on height only 5".) allows a forklift to be lifted safely.

## Traverse beams

Different chassis contact cross beams are available;

- For wheel-free lifting of trailers.
- For lifting the trailer at the king-pin coupling.
- For lifting extremely low vehicles e.g. low floor buses.
- Special versions on request.

## Lighting

Lighting, consisting of two IP 67 rated 36W tube lights, is a unique option available on Stertil-KONI Mobile Column Lifts. When fitted this ensures that the underside of the vehicle is effectively illuminated. (Available in combination with the superior control system.)

