

steril **KONO**



ST1055:
mobile lifting columns with a
capacity of 10,000 lbs each

UNRIVALLED RANGE OF
APPLICATIONS: FROM TRUCK
TO ARTICULATED BUS



Investing in an unrivalled lifting system

Running a workshop requires foresight. Which means seizing opportunities and avoiding problems. With the ST1055 you can do both. With this set of mobile lifting columns you can respond to any situation. You can get down to the job without delay. The only things you need are a level floor and power, which means substantial savings on installation costs. When linking more ST1055S lifting columns, you can further increase the total lifting capacity of 22 tons. It will then be possible to lift vehicles ranging from trucks to articulated busses. Mobile lifting columns are easy to handle. One person can move such sturdy all-rounder to the desired location with minimum effort. By placing lifted vehicles on axle supports, you can further reduce payback, because your mobile lifting columns can then be used elsewhere. Job finished? No problem, storing the columns takes only 32 square feet of your workshop space. In short, there is nothing that can rival working with the ST1055.

ST1055: mobile lifting columns



An impressive array of advantages:

An unrivalled range of applications

A basic set of ST1055 columns (ST1055B) consists of 1 primary column and 3 secondary columns. Via the control cabinet, which is situated on the primary column, the columns can be operated individually, in pairs or simultaneously. Each column of the ST1055S system is provided with a control cabinet, so that each column can be



operated separately. This system can also be extended to 6, 8 or more columns. The connecting cables of the ST1055S are provided with steel interior sheathing. The cable is designed to withstand daily pneumatic tire traffic with no deterioration.

Superior technology

Microprocessor-controlled technology ensures maximum safety

Columns with a capacity of 10,000 lbs each

and parallel running and unique options for individual, pair and simultaneous operation.



Photo: ST1055B

In addition, the lifting system is equipped with an automatic function diagnosis system with error indication.

Hydraulic lifting system

Hydraulic lifting system with a minimum of moving parts.

An important advantage is the absence of parts sensitive to wear such as spindles, nuts or cables, resulting in an exceptionally low maintenance interval and a very long life span. Parts can be supplied until 25 years after the last production date.

Lifetime warranty

The patented, synthetic runner system is self-lubricating and therefore does not require any maintenance.

The lifting system was subjected to 50,000 full-load lifting tests and comes with a lifetime warranty.

Short lifting times

With a lifting and lowering time of only 70 seconds, the ST1055 ranks among the fastest lifting columns worldwide.

Maximum accessibility

With an incredible lifting height of 71", even the tallest technician will find working under the ST1055 to be headache free.

Options:

- Pallet truck mechanism with built-in overload protection to allow for easy positioning.
- Lighting set for the ST1055S.
- Various cross beams for lifting trailers and other frame contact applications.
- Extension set for frame and fork to lift vehicles with in-set wheels. Use of the extension set lowers the capacity rating on any ST1055 column to 8,800 lbs.



- Wheel adapters for smaller wheel diameters R12-R17, (standard R17-R22,5)
- Remote control equipped with a 33 foot cable
- Special exchangeable pick-ups for various vehicles
- Ramp sets allow lifting of three and four wheel forklifts.
- RAL color to customer's specification



S U P E R I O R

Specifications

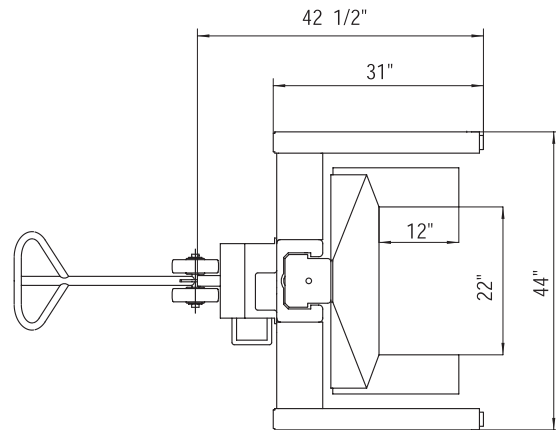
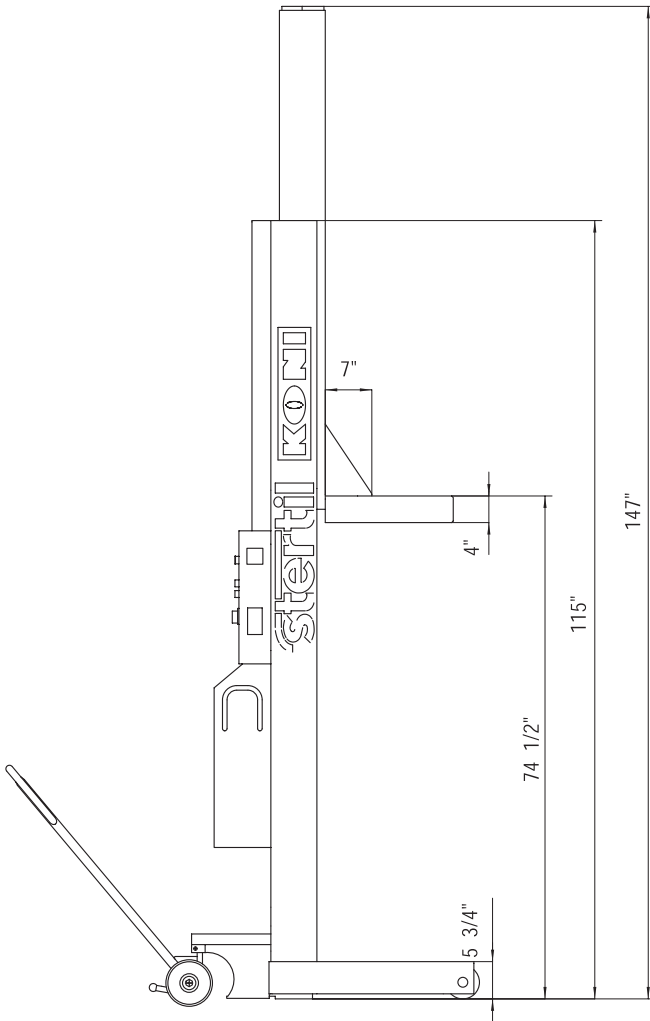
Lifting capacity:	10,000 lbs.
Lifting system:	hydraulic
Lifting time:	70 sec.
Lifting height:	71"
Motor output:	2.2 kW
Weight:	800 lbs per column
Connecting cables ST1055B:	1 x 73" and 2 x 40' per set of four columns
Connecting cables ST1055S:	40' per column, with steel internal sheathing

Maximum safety:

- ALI-ETL certification (United States and North America)
- CSA certification (Canada and North America)
- CE (Europe)
- Automatic stop when highest position is reached
- Operation with dead man's control during raising and lowering
- Automatic activation of electromagnetic locking system (prevents unintended lowering)
- Automatic overload protection
- Microprocessor-controlled system ensuring parallel operation of the tracks
- Splashproof electrical system (IP65)
- Emergency stop button on control cabinet

More information?

For more information on the ST1055 or the other quality products of the Stertil-Koni range please contact us. We shall be glad to be of service to you.



stertil[®] KONI

Stertil Koni U.S.A. Inc., 200 Log Canoe Circle, Stevensville, Maryland 21666

Tel. 410-643-9001 Toll free 800-336-6637 Fax 410-643-8901, www.stertil-koni.com E-mail: lifts@stertil-koni.com



A MEMBER OF THE KROYMANS A.R.M.-STOKVIS GROUP